

**Shamblehurst Primary School**

# **Accessibility Plan**

**Reviewed: June 2017**

## 1. Introduction

At Shamblehurst Primary School our values reflect our commitment to a school where there are high expectations of everyone, to recognise the brilliance in everyone. Children are provided with high quality learning opportunities so that each child attains and achieves all that they are able to. Everyone in our school is important and included. We promote an ethos of care and trust where every member of our school community feels that they truly belong and are valued. We work hard to ensure there are no invisible children here, recognising everyone's uniqueness and success. We recognise learning in all its forms and are committed to nurturing lifelong learners. We are a safe school, committed to improving children's confidence and self-esteem. We know that safe and happy children achieve.

This Accessibility Plan is drawn up in compliance with current legislation and requirements as specified in Schedule 10, relating to Disability, of the Equality Act 2010. School Governors are accountable for ensuring the implementation, review and reporting of progress of the Accessibility Plan over a prescribed period.

The Equality Act 2010 replaced all existing equality legislation, including the Disability Discrimination Act. The effect of the law is the same as in the past, meaning that "schools cannot unlawfully discriminate against pupils because of sex, race, disability, religion or belief and sexual orientation".

According to the Equality Act 2010 a person has a disability if:

- (a) He or she has a physical or mental impairment, and
- (b) The impairment has a substantial and long-term adverse effect on his or her ability to carry out normal day-to-day activities.

The Accessibility Plan is structured to complement and support the school's Equality Action Plan, and will similarly be published on the school website. We understand that the Local Authority will monitor the school's activity under the Equality Act 2010 (and in particular Schedule 10 regarding Accessibility) and will advise upon the compliance with that duty.

## **Objectives**

Shamblehurst Primary School is committed to providing an environment that enables full curriculum access that values and includes all pupils, staff, parents and visitors regardless of their education, physical, sensory, social, spiritual, emotional and cultural needs. We are committed to taking positive action in the spirit of the Equality Act 2010 with regard to disability and to developing a culture of inclusion, support and awareness within the school.

The school recognises and values parent's knowledge of their child's disability and its effect on their ability to carry out everyday activities and respects the parent's and child's right to confidentiality.

The Shamblehurst Primary School Accessibility Action Plan shows how access is to be improved for disabled pupils, staff and visitors to the school within a given timeframe and anticipating the need to make reasonable adjustments to accommodate their needs where practicable.

The Accessibility Action Plan contains relevant and timely actions to:-

- Increase access to the curriculum for pupils with a physical disability and/or sensory impairments, expanding the curriculum as necessary to ensure that pupils with a disability are as equally prepared for life as the able-bodied pupils; (If a school fails to do this they are in breach of their duties under the Equalities Act 2010); this covers teaching and learning and the wider curriculum of the school such as participation in after-school clubs, leisure and cultural activities or schools visits – it also covers the provision of specialist or auxiliary aids and equipment, which may assist these pupils in accessing the curriculum within a reasonable timeframe;
- Improve and maintain access to the physical environment of the school, adding specialist facilities as necessary – this covers improvements to the physical environment of the school and physical aids to access education within a reasonable timeframe;
- Improve the delivery of written information to pupils, staff, parents and visitors with disabilities; examples might include hand-outs, timetables, textbooks and information about the school and school events; the information should be made available in various preferred formats within a reasonable timeframe. For example, if you require large print copies of any written information please ask.

The Shamblehurst Primary School Accessibility Plan relates to the key aspects of physical environment, curriculum and written information.

Whole school training will recognise the need to continue raising awareness for staff and governors on equality issues with reference to the Equality Act 2010.

This Accessibility Plan should be read in conjunction with the following school policies, strategies and documents:

- Behaviour Policy
- Curriculum Policies
- Emergency Plan
- Health & Safety Policy
- School Improvement Plan
- Special Educational Needs Policy
- Teaching and Learning Policy

The Accessibility Plan for physical accessibility relates to the Access Audit of the School, which remains the responsibility of the governing body. It may not be feasible to undertake all of the works during the life of this accessibility plan and therefore some items will roll forward into subsequent plans. An accessibility audit will be completed by the school prior to the end of each period covering this plan in order to inform the development of a new Accessibility Plan for the ongoing period.

The Accessibility Plan will be published on the school website.

The Accessibility Plan will be monitored by the Governing Body.

The Accessibility Plan may be monitored by Ofsted during inspection processes in relation to Schedule 10 of the Equality Act 2010.

Agreed N.Addis (SEND governor) 13.6.27

Approved A.Jones

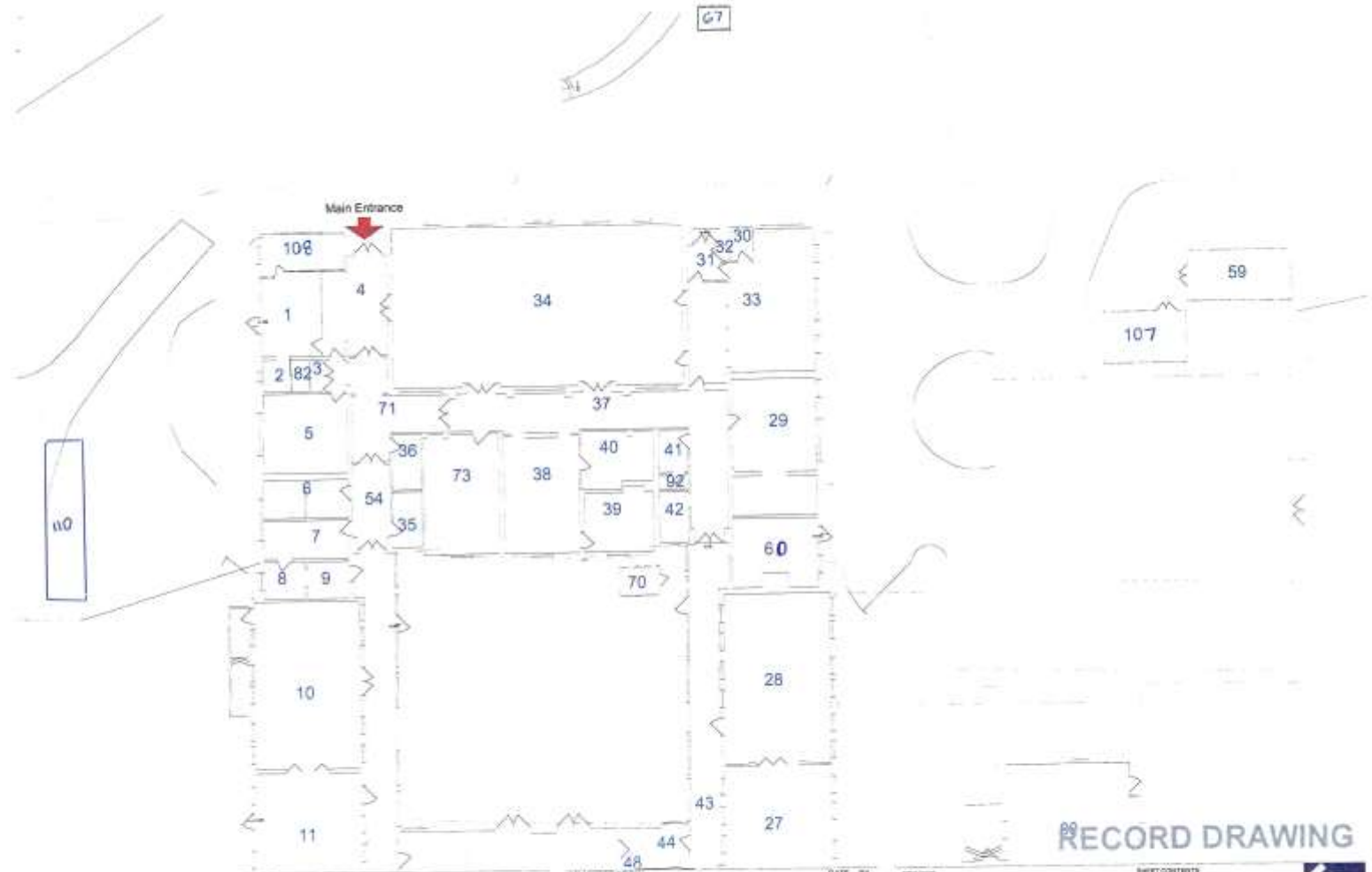
Date 15.6.17

It is a requirement that the school's accessibility plan is resourced, implemented, reviewed and revised as necessary and reported on annually. Attached is a set of action plans showing how the school will address the priorities identified in the plan.

The priorities for the Accessibility Plan for our school were identified by:

- **The Governing Body**
- **Head Teacher**
- **Inclusion Leader**
- **School Business Manager**
- **Site Manager**

Shamblehurst Primary School – ACCESSIBILITY PLAN



 Hambleton County Council  
 HCC Property Services  
 Three Minsters House  
 76 High Street, Winchester SO9 9JA  
 Tel: (01962) 947901

**Area requiring checking on site:**  
 1 This drawing is Council's best estimate. No responsibility is accepted for its accuracy.  
 2 No dimensions are to be quoted from this drawing.

3 This map is reproduced from Ordnance Survey material with the permission of Ordnance Survey on behalf of the Controller of Her Majesty's Stationery Office @ Crown Copyright. Unauthorised reproduction infringes Crown Copyright and may lead to prosecution or civil proceedings. (100019100) (2012)

**REV DESCRIPTION**  
 \* measure

**DATE BY**  
 24/07/12

**PROJECT**  
 Shamblehurst Primary School  
 Southampton SO30 4EJ  
 2224-10008000686

**SCALE**  
 1:100 @ A1  
 1:200 @ A2

**SHEET CONTENTS**  
 Property Records  
 Ground Floor Plan  
 Main Building

**DRAWING NO.**  
 01\_REC/002

**DATE**  
 28/11/11

**DRAWN**  
 SPINT

**CHECKED**  
 SPINT

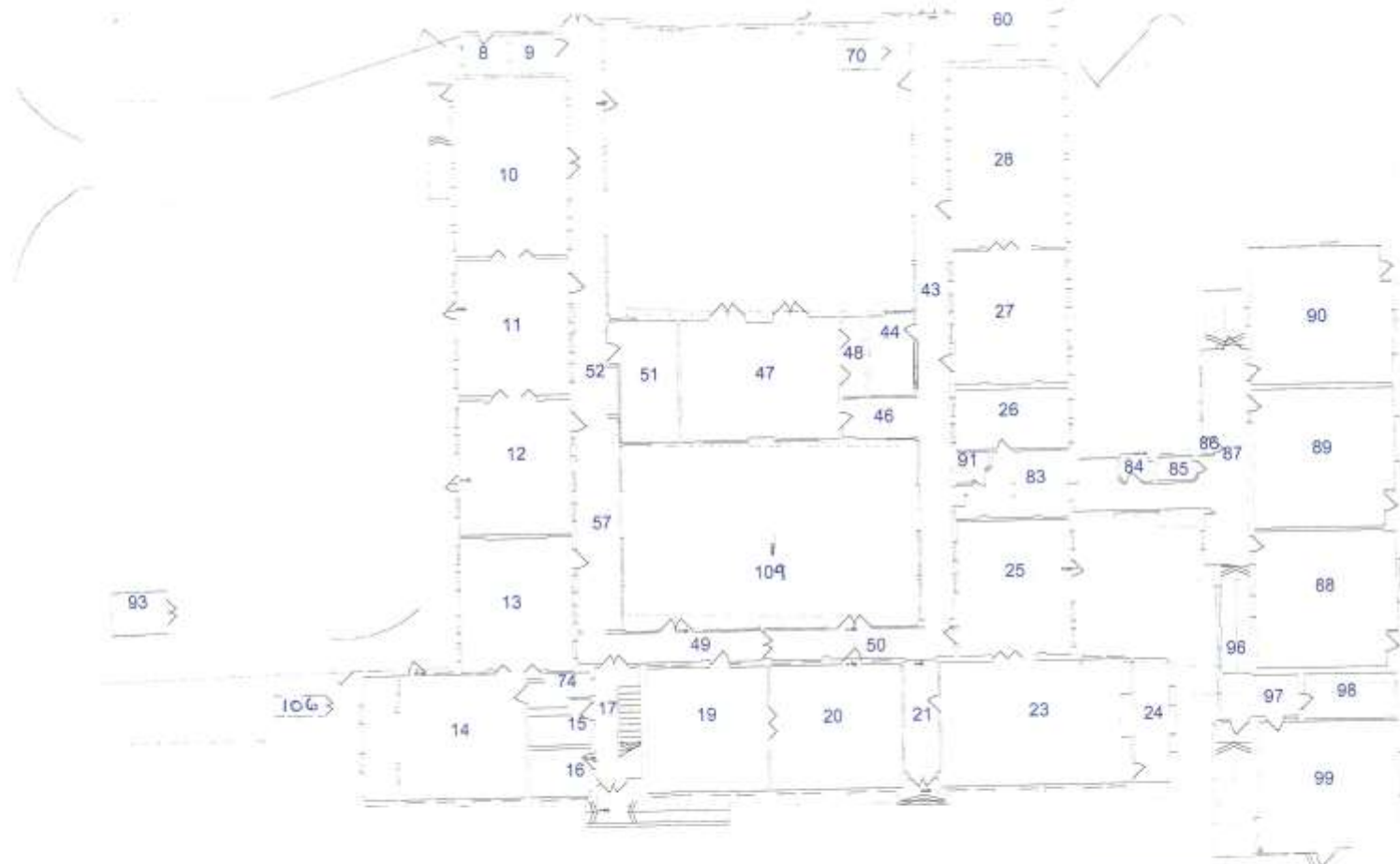
**FILE NO.**  
 224-10008000686/01/002/002

**RECORD DRAWING**



**NOV/02**  
**A**

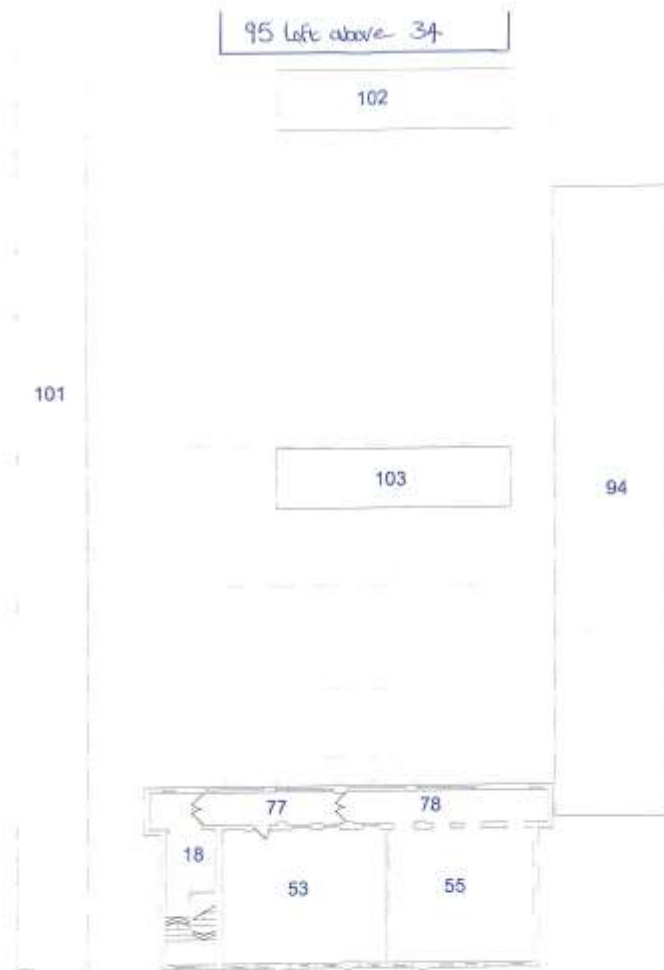
Shamblehurst Primary School – ACCESSIBILITY PLAN



RECORD DRAWING

|   |                                       |  |   |                                       |  |  |                          |
|---|---------------------------------------|--|---|---------------------------------------|--|--|--------------------------|
| <p>Hampshire County Council</p> <p>HCC Property Services<br/>Three Storeys House,<br/>76 High Street, Winchester SO23 8UL<br/>Tel: (01962) 417891</p> | <p>Area requires checking on site</p> | <p><b>NOTES</b></p> <p>1 This drawing is a copyright document. Hampshire County Council 2012. All unauthorised reproduction prohibited. All rights reserved.</p> <p>2 No dimensions are to be taken from this drawing.</p> | <p><b>REV DESCRIPTION</b></p> <p>4. Measure</p> | <p><b>DATE BY</b></p> <p>04/10/12</p> | <p><b>PROJECT</b></p> <p>Shamblehurst Primary School<br/>Southampton SO30 4EJ<br/>2224-10008000666</p> | <p><b>SHEET CONTENTS</b></p> <p>Property Records<br/>Ground Floor Plan<br/>Main Building</p> | <p>Property Services</p> |
|   |                                       | <p><b>SCALE</b></p> <p>1:100 @ A1<br/>1:200 @ A3</p>   | <p><b>DATE</b></p> <p>28/11/11</p>              | <p><b>DRW</b></p> <p>SPNT</p>         | <p><b>CHKD</b></p> <p>SPNT</p>   | <p><b>DRAWN BY</b></p> <p>01_REC/003</p>   |                          |

Shamblehurst Primary School – ACCESSIBILITY PLAN



RECORD DRAWING



HCC Property Services,  
Three Minsters House,  
79 High Street, Winchester SO30 6AA,  
Tel: 01962 847801

AM98 requires  
checking on site

NOTES

1. This drawing is © copyright Hampshire County Council (2012). No unauthorised reproduction permitted. All rights reserved.  
2. No assessments are to be stated from this drawing.

3. This map is reproduced from Ordnance Survey material with the permission of Ordnance Survey on behalf of the Controller of Her Majesty's Stationery Office © Crown Copyright. Unauthorised reproduction infringes Crown Copyright and may lead to prosecution or civil proceedings. 1:10000000, 2010/2

REV DESCRIPTION

A. Issued

DATE BY

24/1/12

PROJECT

Shamblehurst Primary School  
Southampton SO30 4EJ  
2224-10008000666

SHEET CONTENTS

Property Records  
First Floor Plan  
Main Building



SCALE  
1:100 @ A1  
1:200 @ A3

DATE  
28/11/11

DRWDR  
SPINT

CHKD  
SPINT

DRAWING NO.  
01\_REC/007

REVISION  
A



## **ACCESSIBILITY ACTION PLAN**

A recent Access Audit was carried out in March 2017. A number of recommendations were made as follows:

| <b>Access Report Ref.</b> | <b>Item</b>  | <b>Activity</b>   | <b>Timescale</b> | <b>Cost</b>                     |
|---------------------------|--|---|------------------|---------------------------------|
| 1.                        | Information on the School's website for disabled visitors. | Update the school website to ensure information about the accessibility of the school and parking facilities is clear.<br>Inclusion page and Contact page<br>Include telephone number | By June '17      | N/A                             |
| 2. 2.2                    | Marked accessible area for disabled badge holders          | Create a sign to direct people to accessible parking on the tarmacked area  | By Dec '17       | £100                            |
| 3. 3.1, 6.4, 12.3         | Colour contrasting ramps, light fittings                   | Colour contrast items around school to make them stand out.   | By Sept '18      | £100                            |
| 4. 6.5, 14.4, 14.7, 16.6  | Induction Loop   | Investigate option of getting Induction Loop fitted<br>Discuss with Avril Paylor  | By Sept '19      | Awaiting advice from HI adviser |
| 5. 10.4                   | Suitable handrails   | Handrail to be fitted on wall side up the stairs.   | By Sept '19      | £200                            |
| 6. 13.8                   | Back rest  | Install a back rest on the disabled toilet.   | By Sept '18      | £50                             |

|    |                    |  |             |     |
|----|--------------------|--|-------------|-----|
| 7. | Easy read policies | Provide easy read versions of key policies | By Sept '18 | N/A |
|----|--------------------|--|-------------|-----|