

Shamblehurst Primary School, Wildern Lane, Hedge End,
Southampton, Hampshire SO30 4EJ
Telephone: (01489) 782342

Email: adminoffice@shamblehurst.co.uk
Website: www.shamblehurst.co.uk

Headteacher: Anna Jones

Deputy Headteacher: Sally Mohamed

Wednesday 27th January 2021

January 2021 Newsletter

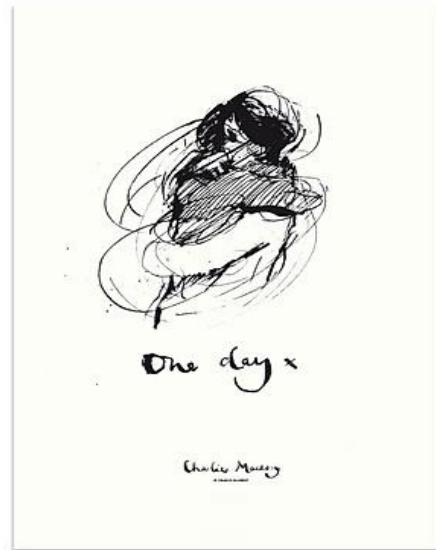
Issue Number - 5

Monday 15th February – Friday 19th February 2021
(Half – Term)



Stay Safe!

A Message From Mrs Jones



Dear Parents,

The picture I have chosen for the newsletter popped up on twitter yesterday. It resonated with me, as I have not been able to give my mum a hug since last March. My mum used to hear readers in Year R having taught for over 40 years, and I know she has really missed coming in to school. Every family has similar stories and 'One Day' we will be through this. So I will keep hoping for that 'One Day'. One day when we will all be back together at Shamblehurst and virtual hugs are a memory. Sending you all a big one now!

We hope everyone remains safe and well at this worrying time. All staff appreciate the challenges and demands that are faced by families learning at home at the moment. Please do use the family aspect of Seesaw to communicate with teachers if there are any problems. We are aware that some children are not watching the uploaded videos of teachers modelling and scaffolding tasks – this is really important and should enable children to independently access the learning. We are working with some year groups to ensure that there are more modelled clips using audio and video, rather than written instructions. You should have a weekly welfare call, we are here to support so if something is not going so well please do let us know so we can work together to get things back on track.

There are 188 children currently accessing learning in school and so the majority of staff are in school teaching in smaller bubbles. Sadly, we are still witnessing Covid restrictions being ignored by some families, with multiple groups meeting and car sharing. With Covid rates in our area extremely high this is worrying and threatens the safety of our community.

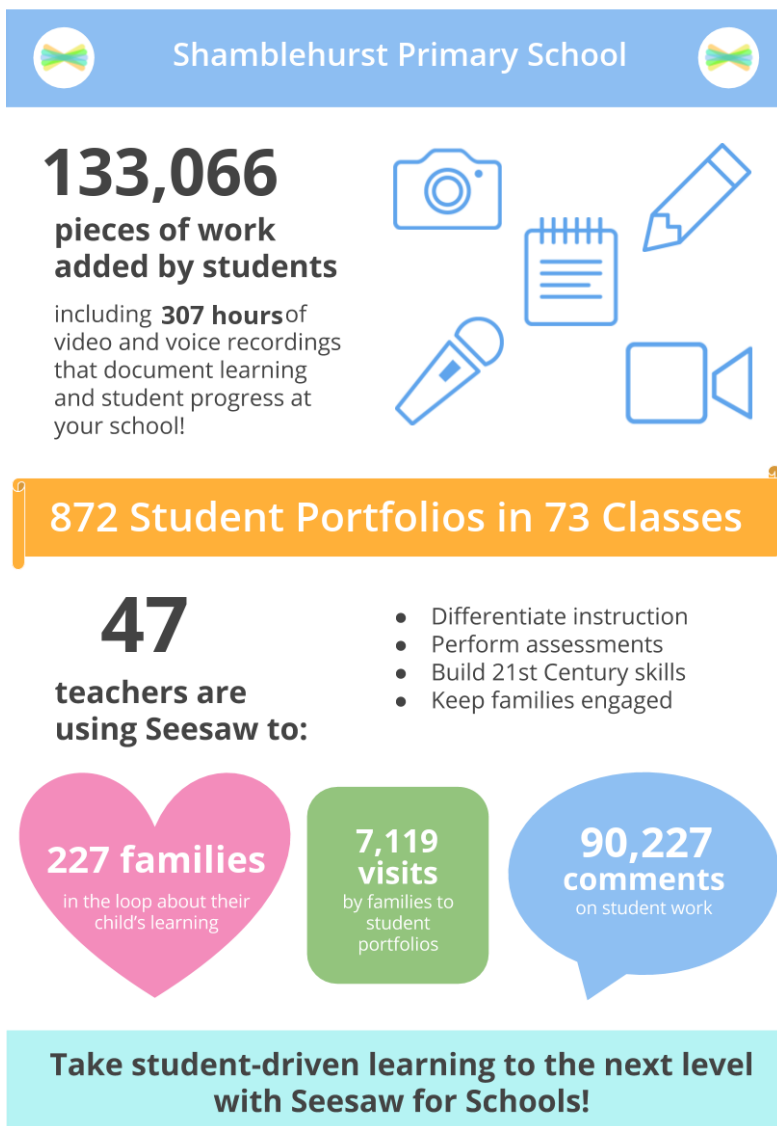
Yet again, the local people of Hedge End are massively supporting us - we have had donations of old laptops, IPADS and PCs, which we have been able to donate to families who were lacking these devices.

St John's Church donated a £1000 to buy additional devices for our children.

An initiative started by one of our families to provide a weekend food and essential items parcel to one family every week in lock down, has snowballed and with their support, we were able to provide three large bundles to families and five smaller ones. We will continue to distribute these parcels in the next few weeks, as well as some half term parcels. Thank you for your kindness.

A big thank you to The Hedge End Food Bank who continue to support members of our community. A special thank you to Mrs Mohamed's mum who works there and goes out of her way to ensure our families are helped as soon as they need it.

Seesaw sent this to us over the weekend – WOW! Thank you everyone – we can do this!



This week staff have had training on using Zoom safely in school. We hope to, by next week, hold Zoom meetings with home learners. It is a time when children can see their teacher in a light hearted and relaxed way – having a bit of fun and perhaps celebrate successes. We will not be delivering live lessons, but will use Zoom to provide some one-to-one teaching or targeted emotional support, small group teaching as well as supporting some of our children who have speech therapy or physical therapy sessions.

Staff will let you know via Seesaw when they will Zoom and we will try and get a timetable as to when home learners can expect this to start.

Lastly, I would like to thank Becky Veal for being our Chair of Governors for the last four years, as well as for being a governor for much longer. Mrs Veal has been a fabulous member of the Shamblehurst team and we thank her for her challenge and support! Mrs Dina Wilson has been appointed as the new Chair of Governors at Shamblehurst.

Thinking of you all.

Very best wishes,

Mrs Jones

Coronavirus

Please remember to contact us if you have outstanding test results, or if your child develops symptoms, so the school can operate track and trace. Please email

adminoffice@shamblehurst.co.uk

During weekends and holidays, the admin office emails will be checked twice daily, once in the morning and once in the afternoon.

In your email please detail:

- What the symptoms are e.g. cough, temperature loss of taste or smell or asymptomatic (no symptoms)
 - When did the symptoms started
 - Has anyone else in your family got symptoms or is Covid positive
- Any close contacts in school - please mention anyone your child plays with/comes to school with
 - When was the test and when was the result received
 - What have Track & Trace have said are the first and last day of isolation

Please put as much detail on the email as possible and a contact number for you if the DFE ask us further questions.

Please can parents and visitors **continue to wear a face covering whilst on school grounds.**

We would like to kindly remind you to please do not keep Teachers on the playground talking and only come into the office if it is essential - please contact us by phone or email.

Please help us continue to keep Shamblehurst Primary School a safe place.

Thank you!



Lateral Flow Testing For Staff

As per government guidelines, staff will begin self testing for Covid this week. The tests will be carried out twice weekly on Monday and Thursday mornings before school. If a staff member tests positive, and your child has had close contact, we will need them to stay at home. We will endeavour to text you by 7.30 am on these days to advise you if they need to isolate. If you do not hear anything, then your child should come in as usual. The staff member who has tested positive will then get a full PCR test and we will further advise you once this test has come back. **With this in mind, please ensure you check your phones on Monday and Thursday mornings in case your child needs to isolate.**

Thank you for your co-operation with this.



Free Data Allowance

Increasing Data Allowances On Mobile Devices To Support Disadvantaged Children

This scheme temporarily increases data allowances for mobile phone users on certain networks. This is so that disadvantaged children and young people can access remote education if their face to face education is disrupted and they do not have access to broadband at home.

Which mobile networks can increase data?

Children with access to a mobile phone on one of the following networks might be able to benefit:

- EE
- O2
- Sky Mobile
- SMARTY
- Tesco Mobile
- Three
- Virgin Mobile
- Vodafone

Other providers will be joining the scheme at a later stage.

How to request a mobile data increase

Contact the school office with your details.

For each request, we need to know:

- The name of the mobile phone account holder
 - The number of the mobile device
- The mobile network of that device (for example 'Three')



Year 3 have been working on the Romans, here is some of their fantastic work!

A Roman Life

Lifestyle
Wealthy Romans had everything they ever longed for with servants and slaves who cooked up exotic dishes of the day.

Drawing of a Roman shield

Food and drink
Romans ate disgusting food such as rotten fish, goats, dogs, horses, snakes and goat heads. They only drank water and wine but grew their vegetables and made bread.

Gods and Goddesses
Jupiter was the God of war. He was so powerful every king was afraid of him. Mars had twin sons called Romulus and Remus.

Other facts
When in battle the Roman soldiers held their shields like a tortoise shell to protect themselves from enemy arrows.

Hobbies and Interests
Roman children played games such as congreo and crosses and hopscotch. Romans liked swimming, running and Olympic.

Numerals
I = 1 V = 5
II = 2 VI = 6
III = 3 VII = 7
IV = 4 VIII = 8
V = 5 IX = 9
X = 10

Roman Facts

Lifestyle
There was a lot of poor and wealthy Romans. They loved conquering countries.

Drawing of a Roman

Food and drink
The Romans loved wine and ate a lot of food but we still eat now but some we don't like.

Hobbies and Interests
They liked a lot of sports hunting and battles.

Gods and Goddesses
They believe in many gods like Mars and Pluto. They did sacrifices.

Numerals
I = 1 V = 5
X = 10 L = 50
C = 100
D = 500
M = 1000

Other facts
The Romans invented concrete and they built aqueducts.

Roman Facts

Lifestyle
Some Romans were treated very nicely and some weren't. The Romans that were treated well were the rich and the ones that weren't were not rich.

Drawing of a Roman

Food and drink
The Romans ate all through domus or porch of grains and for breakfast people only ate bread and fruit.

Hobbies and Interests
The Romans were interested in a big building called the coliseum where Romans fight.

Gods and Goddesses
The Romans worshipped many different gods. Jupiter was the king of gods and was Jupiter.

Numerals
I = 1 V = 5
II = 2 VI = 6
III = 3 VII = 7
IV = 4 VIII = 8
V = 5 IX = 9
X = 10

MY ROMAN FACT FILE

Food And Drink
Romans ate Rice and Nuts and dipped in honey. They also ate peaches. Yuck! Romans had big dinner parties with friends and family. They sat at a very low table so it was like as they were eating lying down! The Romans today drank water but nearly always drank wine.

Hobbies and Interests
Roman interests were sitting in a massive room, watching captured soldiers, blood on the walls, fight or death. If they won they would be free but if they lost the crowd would decide if they got killed or if they lived. Those were called the Gladiatorial Games. Most of them lost and the crowd said they should be killed.

Roman Lifestyle
Roman lifestyle was good if you were rich but if you were poor it would be the opposite. In the early Roman times, Roman women allowed in public. They had to stay at home, look clean and take care of children. Some were known for their great array. Their beautiful dresses and their grand banquets.

Roman Numerals

Gods And Goddesses
Jupiter was the God of Time. Jupiter was King of the Gods. Juno was Queen of the Gods. Neptune was the God of the Sea. Pluto was the God of the underworld. Minerva was the Goddess of Wisdom. Mars was the God of war. Venus was the Goddess of love. Mercury was the messenger to the gods. Apollo was the God of the Sun. Diana was the Goddess of the moon. Cupid was the God of love. All of these gods had symbols to show they were important.

Drawing of a Roman



Well done!



Hedge End Food Bank!



The local food bank in Hedge End, based at King's Community Church, offer food parcels for collection to families that are in need. In certain circumstances they can sometimes deliver

If your family would benefit from a food parcel, please contact the school for a referral.

Food Bank opening times 10.00am to 1.30pm
Monday and Thursday



Feedback to the school

Whilst we welcome feedback during this difficult time, could we please ask that this is done in an appropriate manner.

We will not tolerate bad language.

Thank you.

**CHOOSE
LOVE**



**CHOOSE
LOVE**

Refugee Week

Last month during our refugee week in school, we asked you to donate so that we could support a charity called 'Choose Love'. A charity that supports refugees in crisis. We were absolutely overwhelmed by your kindness and generosity and as a school community we raised just over £800!! We have now chosen things from the Choose Love website and this is what we have donated.

- 15 children's coats**
- 7 sleeping bags and warm blankets**
- 5 filled toiletry and wash bags**
- 5 toilet and shower kits**
- 4 water supply kits**
- 8 tents**
- 4 education packs**

Please can you let your wonderful children know what we have donated and once again a massive thank you for your kindness.

Mrs Hillman and Miss Stapleton



HELP WITH LITERACY



To help support a culture of reading within your home, please check out this really useful website, which gives excellent strategies for supporting reading at home. Whilst we appreciate home learning comes with great challenges, this site offers some practical advice, along with links to other sites where your child can access free audible and e books.

[https://literacytrust.org.uk/blog/ways-to-keep-your-
childs-reading-up-while-schools-are-closed/](https://literacytrust.org.uk/blog/ways-to-keep-your-childs-reading-up-while-schools-are-closed/)

[https://www.booktrust.org.uk/books-and-reading/have-
some-fun/](https://www.booktrust.org.uk/books-and-reading/have-some-fun/)

[https://www.oxfordowl.co.uk/for-home/find-a-
book/library-page/](https://www.oxfordowl.co.uk/for-home/find-a-book/library-page/)

<https://stories.audible.com/start-listen>

<https://www.lovereading4kids.co.uk/>

Miss Brine

Donations



A big thank you to St. Johns Church for their donation of £1,000 towards new laptops for the school.

Thank you to
F One Technologies
for their donation of
'pre-loved' PC's for the
school.

f1one
technologies

Thank you!

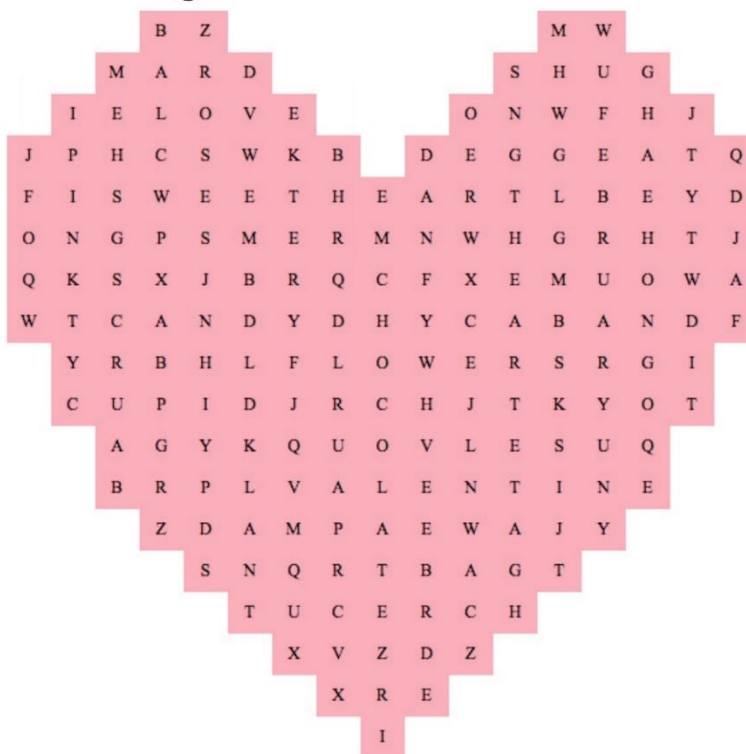
Many thanks for the 'pre-loved' iPads and laptops that have been donated to the school by parents.

We still need iPads and chargers if anybody has any old devices they would be very welcome.

Puzzle Page



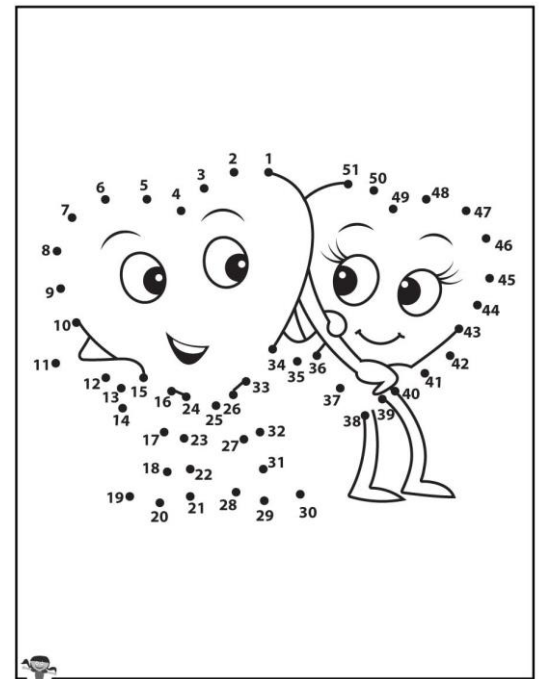
Valentine's Day Word Search



LOVE
CHOCOLATE
PINK
VALENTINE
ROSES

CUPID
FEBRUARY
RED
HUG
FLOWERS

CANDY
HEART
SWEETHEART
CARD
SWEET



Joke

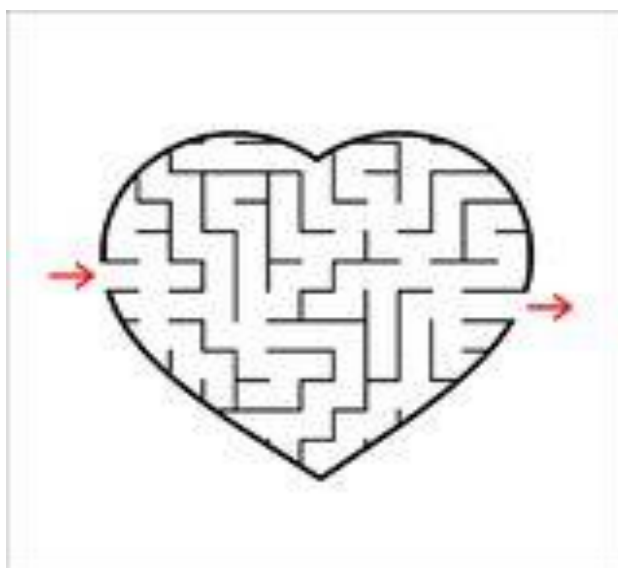
Corner

Q: What did the stamp say to the envelope on Valentine's Day?

A: I'm stuck on you!

Q: What do you call the world's smallest Valentine?

A: A Valen-teeny!



The Shamblehurst SEND Team

(Special Educational Needs and Disabilities)



Wellbeing Award for Schools

We have exciting news to share! Shamblehurst Primary School are undertaking the Wellbeing for Schools Award. Never one to rest on our laurels, we strive to be proactive in providing the very best for our children, parents/carers, staff and the local community. The Wellbeing for Schools Award will support us to improve our best practice as well as implementing new ideas.

Our tagline at Shamblehurst is 'Building dreams, shaping futures and inspiring lifelong learning'. The basis of this journey is to ensure mental health and well-being is at the heart of our school community. We recognise that children's mental health is a crucial factor in their overall wellbeing and will affect their learning and achievement. Parent/carer and staff wellbeing are equally as important in supporting children effectively.

We know this is a big undertaking particularly during the COVID pandemic but we are up to the challenge!

We are currently undertaking an audit of the school to highlight best practice and areas to develop. We will shortly be sending out parent and pupil surveys to gain your views and ideas. We will also keep you updated of our progress in our school newsletter.

For more information about the award please visit:

<https://www.awardplace.co.uk/award/was>

