



Shamblehurst Primary School, Wildern Lane, Hedge End,  
Southampton, Hampshire SO30 4EJ

Telephone: (01489) 782342

Email: [adminoffice@shamblehurst.co.uk](mailto:adminoffice@shamblehurst.co.uk)

Website: [www.shamblehurst.co.uk](http://www.shamblehurst.co.uk)

Headteacher: Anna Jones

Deputy Headteacher: Sally Mohamed

Thursday 24th October 2024




# October 2024 Newsletter



Issue Number – 2

**We hope everyone has a lovely half-term  
and we look forward to welcoming you  
back on Monday 4th November 2024!**



# Year 2 - Fort Nelson Trip

On Wednesday 2nd October, Year 2 went to Fort Nelson to embed and deepen our learning done so far in History and on Florence Nightingale. To think also about our enquiry question "How much difference can one person make?" What a fantastic day from start to finish. The day began when we were greeted by Florence Nightingale and Gunner Scrub. They worked with us during 3 hands on and interactive workshops. One workshop took us down the long, dark tunnels to explore what a hospital ward would have been like in Scutari hospital during the Crimean War. We then went to learn about hospitals now and how they are clean and hygienic compared to dirty and unhygienic during the 1850s. Another activity was to inspect the fort, to be detectives and look for evidence whether it was proof that something was hygienic or unhygienic. The final interactive workshop was to learn "What life was like in the Crimean War?" We looked at artefacts and gathered evidence to decide who might be living in the camp and also what job role they did. Florence Nightingale and Gunner Scrub stayed in character all day and were absolutely brilliant. So much was learned and we know the children will remember so much from their day.

Mrs Hillman and Miss Patten



We have over 1000 outstanding books missing from our library. Please can everyone have a good look at home to see if they have any and return these to the school. We will be sending out a list of books that were issued on your child's account (these may have been returned and not scanned back in properly). However, can parents and children still have a good search.

All children's loans have now been wiped from the system for this academic year but moving forward, we will be asking for a voluntary donation of £4 for every book that is lost or damaged.

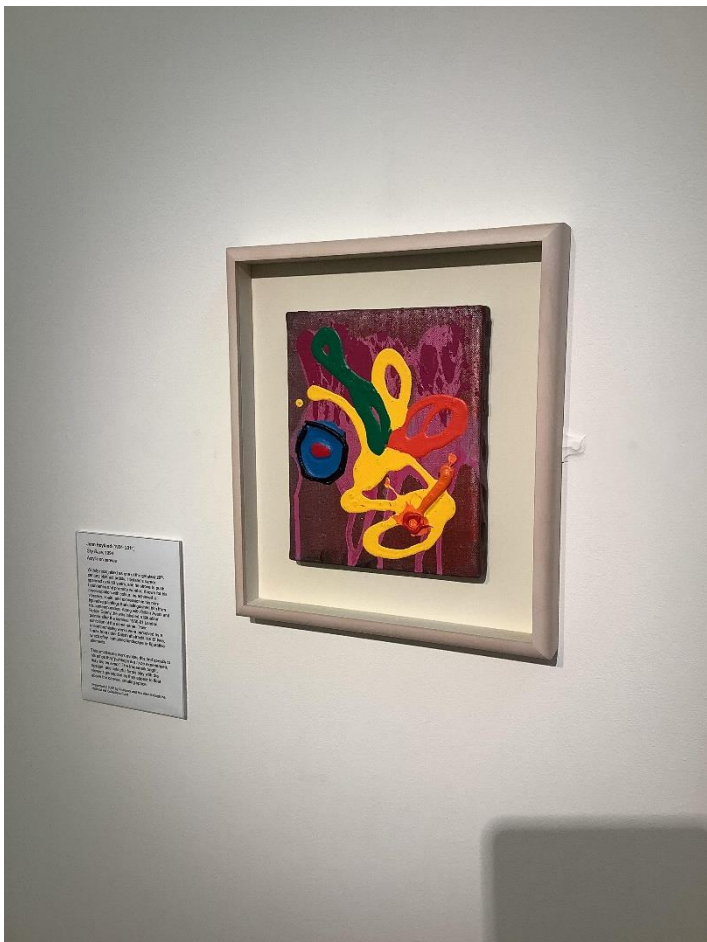
We thank you for your understanding.



# Year 1 - Art Gallery Trip

Year 1 went to the art gallery last week to kick off our enquiry question of "Is art only created by famous artists?" We took part in a workshop where we experimented with screen printing and creating texture. We also took part in a guided tour around the gallery!

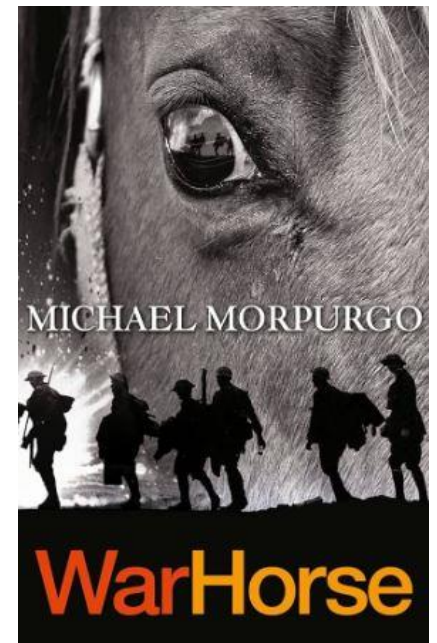
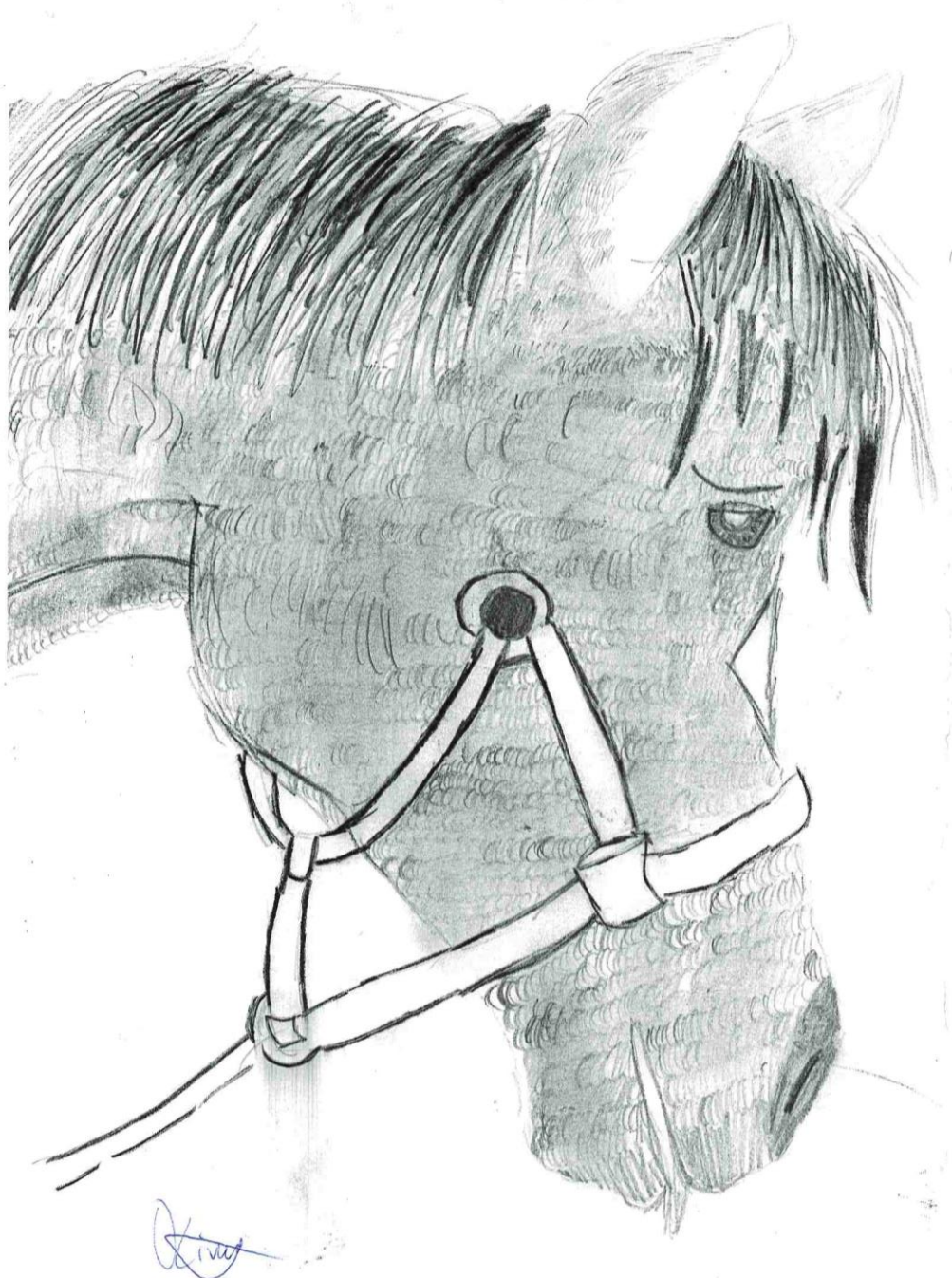
All children were amazing showing respect to all and doing Shamblehurst proud! Well done Year 1!







On Thursday 10th October 2024, Year 6 went to the Mayflower Theatre to watch the matinee performance of War Horse. The following day, some of the cast came into school, along with ITV News, with Baby Joey from War Horse to develop the children's learning further. An incredible experience for the children to bring their learning to life.



An incredible drawing by Olivia in Year 6 following their trip to the Mayflower to watch War Horse.





# Open Days

Is your child due to start school in  
September 2025?

Please contact us to book your place as there are limited spaces for each session  
We warmly invite you to visit Shamblehurst Primary School on either

**Tour of the School with Headteacher**  
Wednesday 6th November 2024 at 9:15am  
or 1:30pm  
Thursday 7th November 2024 at 9:15am,  
1:30pm or 5:00pm

**Tour of the School with Headteacher and SENDCo**  
Wednesday 13th November 2024 at 1:30pm

**Tour of the School with Headteacher**  
Monday 18th November 2024 at 9:15am or  
1:30pm

**Tour of the School with Headteacher and SENDCo**  
Monday 25th November 2024 at 10:00am or  
1:30pm

**Stay and Play Session Tours** - come and  
join us for a stay and play session with a  
tour of the school

**Stay and Play Session with Headteacher**  
Wednesday 6th November 2024 at 3:20pm  
- 4:20pm

Wednesday 20th November 2024 at  
3:20pm - 4:20pm

Wednesday 27th November 2024 at  
3:20pm - 4:20pm

**Stay and Play Session with Headteacher  
and SENDCo**

Wednesday 4th December 2024 at  
3:20pm - 4:20pm



Shamblehurst Primary School, Wildern Lane, Hedge End, Southampton, Hampshire, SO30 4EJ

- 01489 782342 - adminoffice@shamblehurst.hants.sch.uk - www.shamblehurst.co.uk - www.facebook.com/shamblehurstprimary

jamzdance.co.uk  
@jamzdance  
07929 095405

**STAGE KIDZ**  
PRESENTS

**halloween fun day!**

**TUESDAY**  
**29TH OCTOBER**

AGE 4-16  
9AM- 3PM  
WILDERN SCHOOL

SPOOKY TUNES- THRILLING GAMES- ELECTRIFYING DANCES  
**PRIZES FOR BEST COSTUME**  
SING- DANCE- ACT- CRAFT VISIT: JAMZDANCE.CO.UK

jamzdance.co.uk  
@jamzdance  
07929 095405

**STAGE KIDZ**  
PRESENTS

**Christmas**  
FUN DAY!

A JAM-PACKED DAY OF CHRISTMAS  
MAGIC- SINGING, DANCING, ACTING,  
CRAFTING, PLAYING GAMES AND  
FEELING FESTIVE WITH FRIENDS!

**MONDAY**  
**DECEMBER 23RD**  
9AM- 3PM  
AGE 4- 16 YRS  
WILDERN SCHOOL


\*JAMZDANCE.CO.UK





Thank you!

Thank you to everyone for their kind donations of food for our Harvest on Thursday 17th October 2024!

Shamblehurst Primary School.  
Thank you for your continued support.  
God bless you all! 

[WWW.CLEVERFOODHUB.COM](http://WWW.CLEVERFOODHUB.COM)

Fun educational games, easy-to-make recipes, produce showcase, nutritional info & learning resources.

**THE CLEVER FOOD HUB**

Growing and learning with the community



 University of Southampton

# EXPLORE HUMAN EXPERIENCE

**Arts and Humanities Day**

**Saturday 9<sup>th</sup> November**

→ 10:30 – 16:30

→ Southampton Cultural Quarter

Free activities, workshops, exhibitions and talks.



 **Book your tickets**  
[www.southamptonartshumfest.co.uk](http://www.southamptonartshumfest.co.uk)  
f X @ #UoSArtsHumFest



Explore human experience at Arts and Humanities Day this November!

Arts and Humanities day is the University of Southampton's free family-friendly annual celebration of the Humanities and Arts. Families will be able to explore hands-on activities, workshops, talks, and exhibits presented by students, researchers, local community groups and artists. This year we'll be at the Southampton Cultural Quarter on Saturday 9th November 2024, in collaboration with the University of Southampton's branch of the ESRC Festival of Social Science, John Hansard Gallery, MAST Mayflower Studios and Southampton City Art Gallery. There's even a competition to win a family pass for the Turner Sims Southampton Winter Family Day for those who travel sustainably to the event. Free tickets can be booked through the festival website: [southamptonartshumfest.co.uk/arts-humday](http://southamptonartshumfest.co.uk/arts-humday)







OCTOBER HALF TERM 2024

# HOLIDAY CAMP

Wildern School, Hedge End

**YEARS 1 TO 6**

9AM - 3PM  
MONDAY 28TH  
TUESDAY 29TH  
WEDNESDAY 30TH

£25 PER DAY OR £67.50 ALL 3 DAYS

BOTH BOYS AND GIRLS ARE WELCOME.

THE COURSE WILL BE FULL OF FUN AND LAUGHTER AND WILL PROVIDE AN OPPORTUNITY TO LEARN NEW SKILLS, PARTICIPATE IN COMPETITIONS AND GAMES BUT ALSO MAKE NEW FRIENDS WHO HAVE THE SAME INTEREST.

**ABOUT ME**

OVER 15 YEARS EXPERIENCE WORKING IN SOUTHAMPTON FC ACADEMY

ELITE LEVEL COACH

UEFA A LICENCE QUALIFIED

EXPERIENCE IN WORKING WITH VARIOUS AGE GROUPS AND WITH DIFFERENT PLAYING FORMATS

CONTACT ANDY ON 07584120898 | [f @TOPMARKSFOOTBALLCOACHING](#) | [@TOPMARKSFOOTBALL](#)

# OCTOBER

## HALF-TERM HOLIDAY

### FOOTBALL COURSES

AT EASTLEIGH FOOTBALL CLUB,  
STONEHAM LANE, SO50 9HT  
9AM - 3PM | AGES 6-13




MON 28TH OCT - FRI 1ST NOV  
£20 PER DAY  
£80 FOR THE WHOLE WEEK








FREE TICKETS AVAILABLE  
FOR FIRST TEAM FIXTURES!  
FUN FOOTBALL PRIZES  
MEET FIRST-TEAM PLAYERS

BOOK YOUR PLACE ONLINE



SCAN HERE

ANY QUESTIONS?  
CONTACT JOSH NACE [jnace@eastleighfc.com](mailto:jnace@eastleighfc.com)

## SCHOOLS DAY AT THE SILVERLAKE



JOIN US FOR EASTLEIGH FC VS BOSTON UNITED ON SATURDAY 26TH OCTOBER AS WE CELEBRATE THE YOUTH OF OUR LOCAL COMMUNITY

### ALL TICKETS 50% OFF!

FOR SCHOOL CHILD AND ALL ACCOMPANYING FRIENDS AND FAMILY

THE SCHOOL WHO SELLS THE MOST TICKETS RECEIVES A SIGNED SHIRT FROM THE FIRST TEAM!

BOOK YOUR TICKETS NOW AT [BIT.LY/SCHOOLS50](https://bit.ly/schools50)  
USING CODE: "SCHOOLS50"

ANY QUESTIONS PLEASE EMAIL: [jnace@eastleighfc.com](mailto:jnace@eastleighfc.com)



SCAN HERE