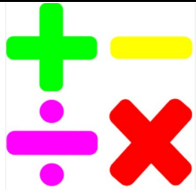


# Curriculum Letter Year 5

## Summer —2025



### Maths



We will begin working on our statistics unit, where the children will interpret and draw graphs and charts. Also, we will be learning about shape and position and direction through our morning tasks. Following on from this, children will revisit decimals to consolidate learning.

### Homework

Homework will continue to be set on a Thursday, and due back in on the following Tuesday.

This is one piece of SPAG and one piece of maths related work.

Please continue to encourage the children to practise their times tables and spellings at home too.

Our **enquiry question** for this term will be:

**'Is nature always on our side?'**

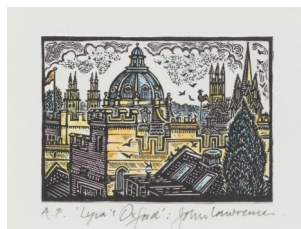
During this Geography led enquiry, the children will explore compass work and study a region of North America, comparing physical and human characteristics to areas of the UK.

In science, children will be studying living things, their habitats and reproduction of mammals and plants.

Children will be looking at the effects of climate change which will tie into our English topic of 'Floodland', as well as a range of Guided Reading texts.

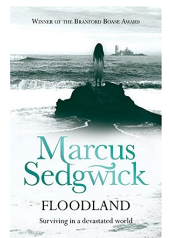
Alongside our Geography project, children will be looking at the work of John Lawrence to inspire their own pieces linked to Floodland.

At the end of the term, there will also be a short history unit on the Mayan civilisation in History: looking closer at art, culture and food.



### English/ Reading

In English this half term, we will be predominantly using Marcus Sedgwick's 'Floodland' as a text driver. Children will use this to complete a variety of 'big writes' including a setting description of a cathedral, a poem and a letter. We will also look to do some non-fiction writing based on The Water Aid.



**PE -** This is on a Tuesday afternoon and Friday morning. No change from last term.

**Music -** As the summer approaches, we will be listening to and learning music from the sunny southern islands in the Caribbean: Trinidad and Tobago. We will focus on duration and the rhythmic patterns found in calypso music. We will also focus on pitch, mapping out melodies and using chords to accompany our calypso singing. We will use tuned percussion and ukuleles in our

exploration of chords.



**Computing -** Learners will develop their knowledge of 'selection' by revisiting how 'conditions' can be used in programming, and then learning how the 'if... then... else...' structure can be used to select different outcomes depending on whether a condition is 'true' or 'false'. They represent this understanding in algorithms, and then by constructing programs in the Scratch programming environment.